



InfoShare® Major Incident Module

We are proud to announce our newest command and control tool to assist incident and task force commanders in managing complex investigations, the Major Incident Management Module (MIM). Built upon the flagship InfoShare Base application it has the ability to integrate with the Investigation and Intelligence Modules and our CAD software. The MIM manages data quickly and easily and is also integrated with a visual link analysis tool and GIS Mapping tool. The MIM is deployed at the Bergen County Prosecutor's Office in conjunction with the UASI (Urban Areas Security Initiative). The BCPO has the responsibility of managing major incidents in the county with 70 individual law enforcement entities which is the most in the state of New Jersey. The MIM will provide the Bergen County law enforcement community with the ability to manage major events via one uniform application. The BCPO will also act as the host agency for other UASI counties to access the MIM to manage incidents in their respective counties or across county boundaries. Additionally, the Camden County Prosecutor's Office as part of the Strategic Multi Agency Shooting & Homicide Team is deploying the MIM to manage violent crime investigations in the City of Camden, recently named the 2nd most violent city in the United States.



Multi-Functioning Design

- ✓ Task Force Management
- ✓ Mass Casualty Management
- ✓ Terrorist Incident Investigation Management
- ✓ Major Crimes Management
- ✓ Multi Jurisdiction Crime Spree Investigation Management
- ✓ The home screen allows enabled users to view or manage:
 - Multiple Operations
 - Multiple Jurisdictions
 - Multiple Leads

Add and Track Leads

- ✓ Add, edit and follow leads in a single case with events from multiple jurisdictions
- ✓ Different agencies can share data in one application
- ✓ Color coded display to show status of the lead
- ✓ Hyperlinked lead numbers display the lead summary which contains all of the data that has been entered into the lead details
- ✓ Assign staff members to leads for follow up
 - Ability to set the level of importance for the lead
- ✓ Linkable leads show the clear line of investigation throughout each incident

Lead #	Open Date	Assigned Staff	Description	Disposition Narrative	Print By
001	08/15/2011	USER_SUPER	2 African American males seen fleeing vehicle pedestrian from vehicle	08/15/2011	LOCAL_SUPER
002	08/15/2011	USER_SUPER	2 African American males seen fleeing vehicle pedestrian from vehicle	08/15/2011	LOCAL_SUPER
003	08/15/2011	USER_SUPER	2 African American males seen fleeing vehicle pedestrian from vehicle	08/15/2011	LOCAL_SUPER
004	08/15/2011	USER_SUPER	2 African American males seen fleeing vehicle pedestrian from vehicle	08/15/2011	LOCAL_SUPER
005	08/15/2011	USER_SUPER	2 African American males seen fleeing vehicle pedestrian from vehicle	08/15/2011	LOCAL_SUPER
006	08/15/2011	USER_SUPER	2 African American males seen fleeing vehicle pedestrian from vehicle	08/15/2011	LOCAL_SUPER
007	08/15/2011	USER_SUPER	2 African American males seen fleeing vehicle pedestrian from vehicle	08/15/2011	LOCAL_SUPER
008	08/15/2011	USER_SUPER	2 African American males seen fleeing vehicle pedestrian from vehicle	08/15/2011	LOCAL_SUPER
009	08/15/2011	USER_SUPER	2 African American males seen fleeing vehicle pedestrian from vehicle	08/15/2011	LOCAL_SUPER
010	08/15/2011	USER_SUPER	2 African American males seen fleeing vehicle pedestrian from vehicle	08/15/2011	LOCAL_SUPER

Color Coded Lead Assignments

Manage Staff Assignments

- ✓ Assign staff members to the operations from multiple agencies
- ✓ Variety of staff types that are assignable:
 - Investigator
 - Legal Advisor
 - Supervisor
 - Read Only Access
 - Entry Only Access

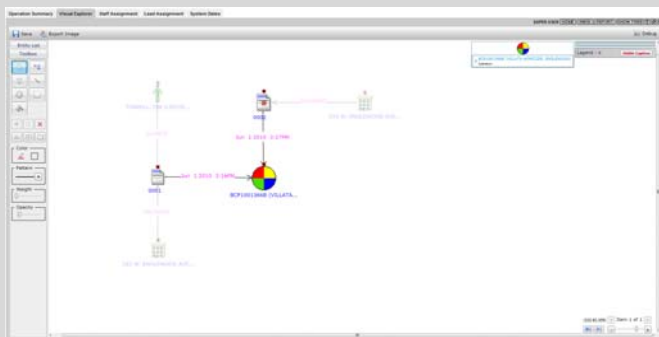


Manage Lead Assignments

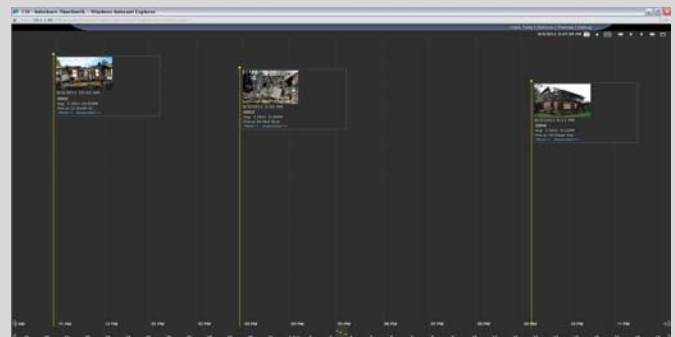
- ✓ Assign staff from the operation to leads either during their entry or after the lead has been reviewed
- ✓ Ability to assign multiple staff members of the same or different type to each lead as necessary

Link Analysis

- ✓ Displays how leads are linked together to help visually map the events of the operation
- ✓ Shows the relationship between:
 - Subjects
 - Sources
 - Incidents
 - Addresses
 - Leads
- ✓ Ability to alter the way that the Link Analysis graphic is presented to emphasize certain leads or relationships:
 - Scalable
 - Adjustable Leads
 - Color Coding



Link Analysis



Timeline

Timeline

- ✓ View of all the leads and events that have transpired in the case
- ✓ Multiple time scales allow the user to easily choose a certain period to view the timeframe of certain events
- ✓ Mouse-over events to show popup box containing a brief summary of the event on the timeline
- ✓ Ability to add pictures to events and populate them within the timeline

CSITECHNOLOGY GROUP

330 Mac Lane, Keasbey, NJ 08832 WWW.CSITECH.COM

Telephone: 1 (855) CSI-4-GOV (732) 346-0200 Fax: (732) 346-0209